

# Solt PC Monitoring User's Manual

- Map Type -

July 2016

**SÔLT**

SOLT Co., Ltd.

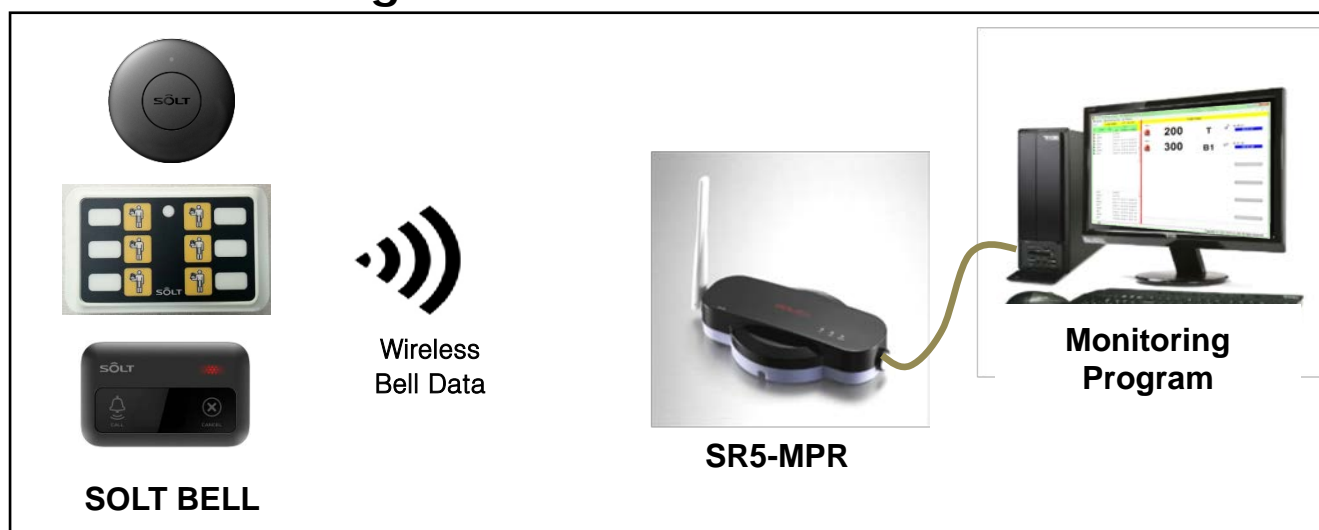
## 1. Table of Contents

1.	Table of Contents.....	2
2.	Overview .....	3
3.	Hardware Configuration.....	3
4.	Program Installation.....	3
4.1.	Operation System.....	3
4.2.	Hardware Recommendation .....	3
4.3.	Driver Installation for USB to Serial Cable.....	3
4.4.	Installation of Solt Monitoring Program .....	4
4.4.1.	Location of Shortcut Icon.....	6
5.	Hardware Configuration.....	7
5.1.	Hardware Wiring.....	7
5.2.	Specification of Communication Cable.....	7
6.	Program Execution.....	8
6.1.	Program Startup.....	8
7.	Setting.....	8
7.1.	Bell Registration & Edit (FILE – BELL SETTINGS) .....	8
7.2.	Map Registration (FILE – MAP SETTINGS) .....	10
7.3.	Bell Coordinate Setting (FILE - MAP-BELL MATCHING).....	11
7.3.1.	Bell Location Setting.....	11
7.3.2.	To Verify "Save" .....	11
7.3.3.	Excel Conversion & Description of Icons .....	12
7.3.4.	Global Change of Icon Size.....	12
7.4.	Setup.....	12
7.4.1.	Preference.....	12
7.4.2.	Time .....	13
8.	Monitoring View.....	14
8.1.	Log Data.....	14
8.2.	Call Data.....	14
8.3.	Memo.....	15
9.	Statistics.....	15
9.1.	Search Condition.....	15
9.2.	Result .....	16
9.3.	Chart.....	16

## 2. Overview

- The Solt Monitoring Program is a PC Application for places installed with the Solt wireless call system, realizing the statistics and search by date, time and place of information of calls made within the place by collecting the call information and saving it in the system's own DB.

## 3. Hardware Configuration



[System Configuration]

## 4. Program Installation

### 4.1. Operation System

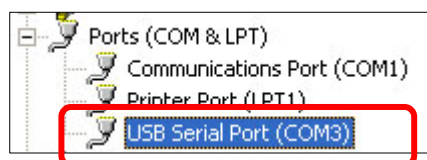
- Windows<sup>®</sup> XP, Vista, 7, 8, 10 (x86, x64 Compatible)

### 4.2. Hardware Recommendation

- CPU- Intel<sup>®</sup> Core2 duo, RAM 1GB, HDD 200MB, **Resolution - 1366\*768**


### 4.3. Driver Installation for USB to Serial Cable

- Connect the "USB to Serial Cable" to a PC.
- Install the "USB TO Serial Cable Driver" using the Driver CD provided.
- Upon installation, check that the USB Serial Port is installed from Port (COM & LPT) under "Device Manager".

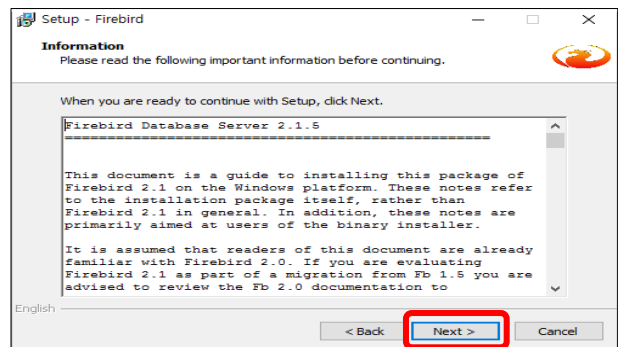
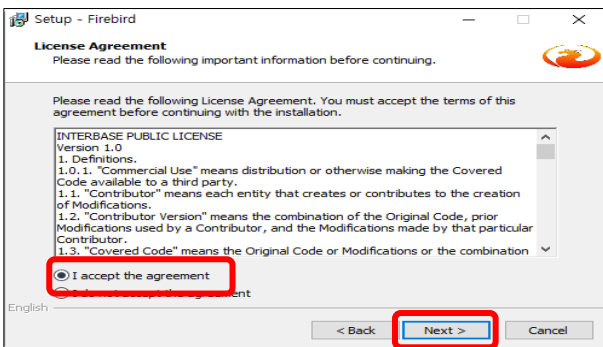
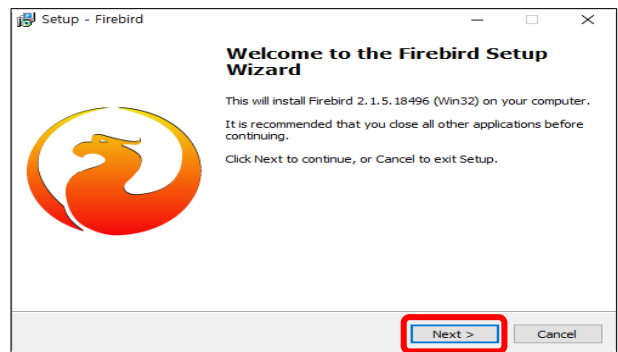
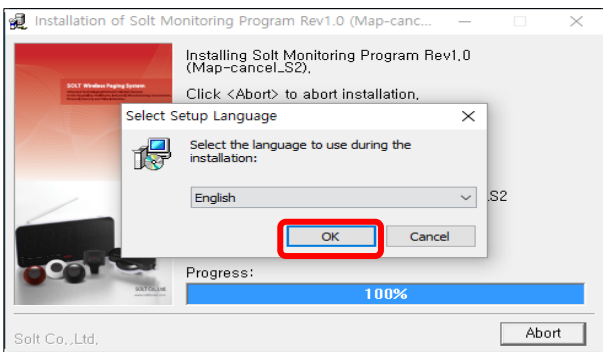
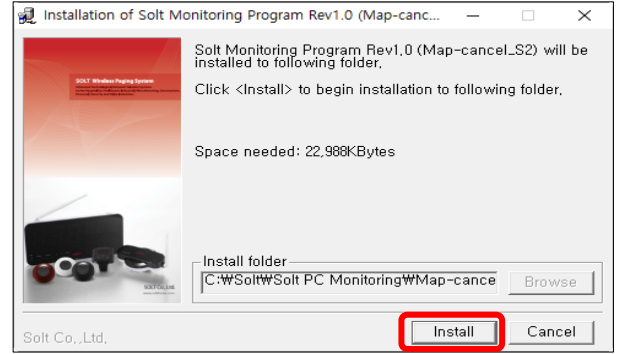
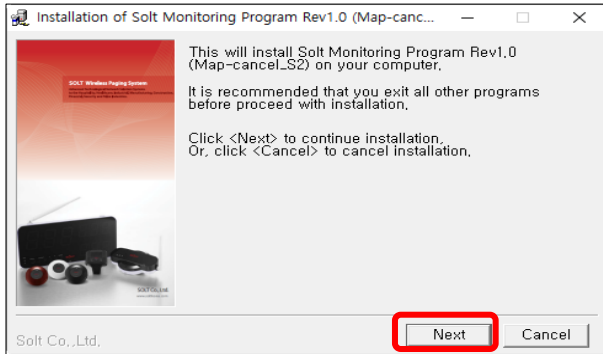


## 4.4. Installation of Solt Monitoring Program

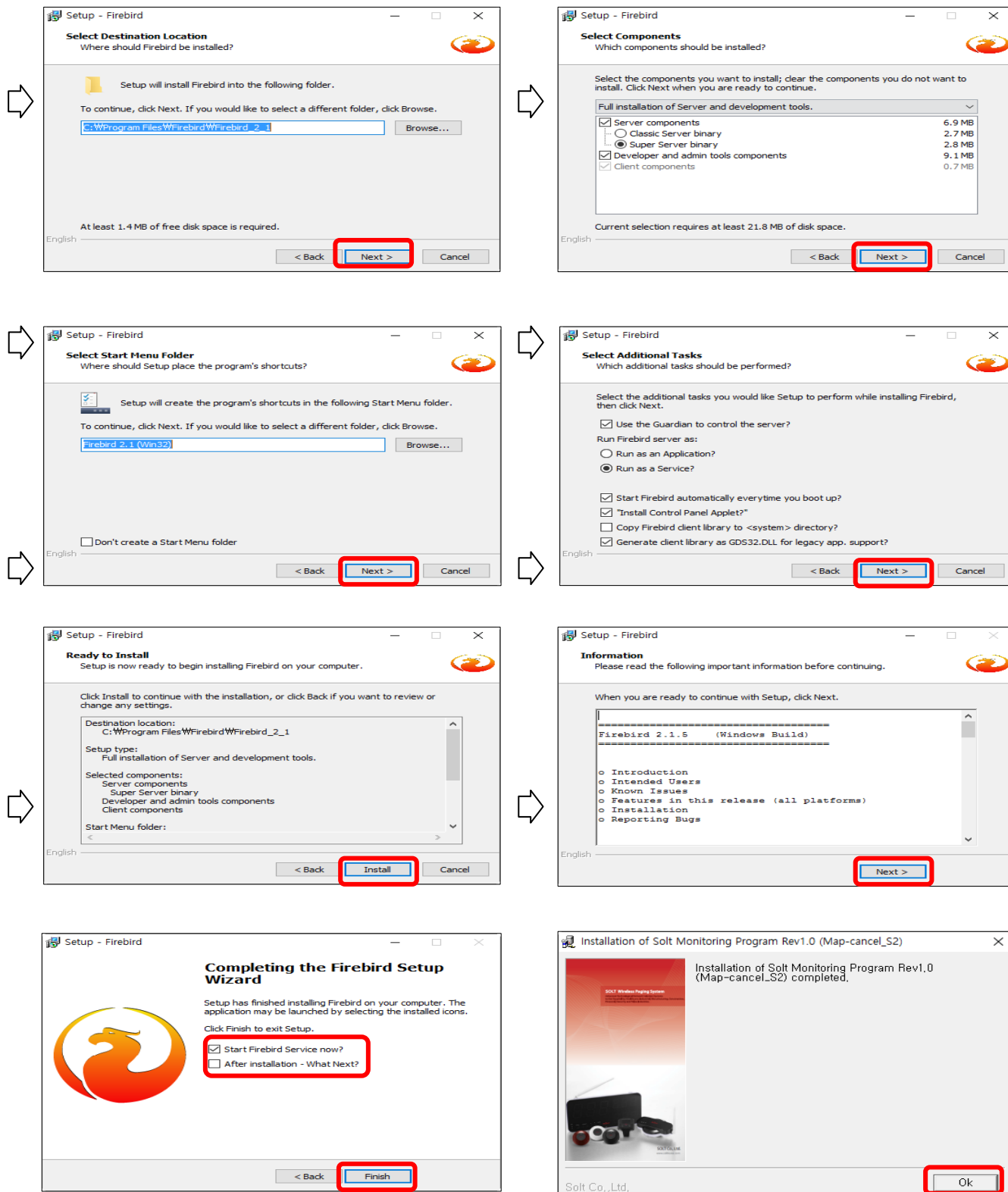
- ① Execute the installation file provided.

 Solt Monitoring Install Program.exe

- ② Proceed in the following order to finish the installation of Monitoring Program.



# Solt PC Monitoring Program User's Manual



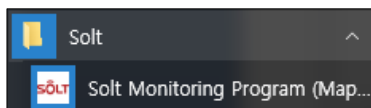
## 4.4.1. Location of Shortcut Icon

- ① Wallpaper: Solt Monitoring Program

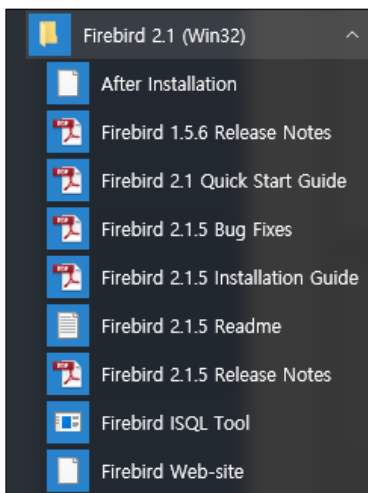


- ② Start Menu:

*Start – All Programs – Solt – Solt Monitoring Program*



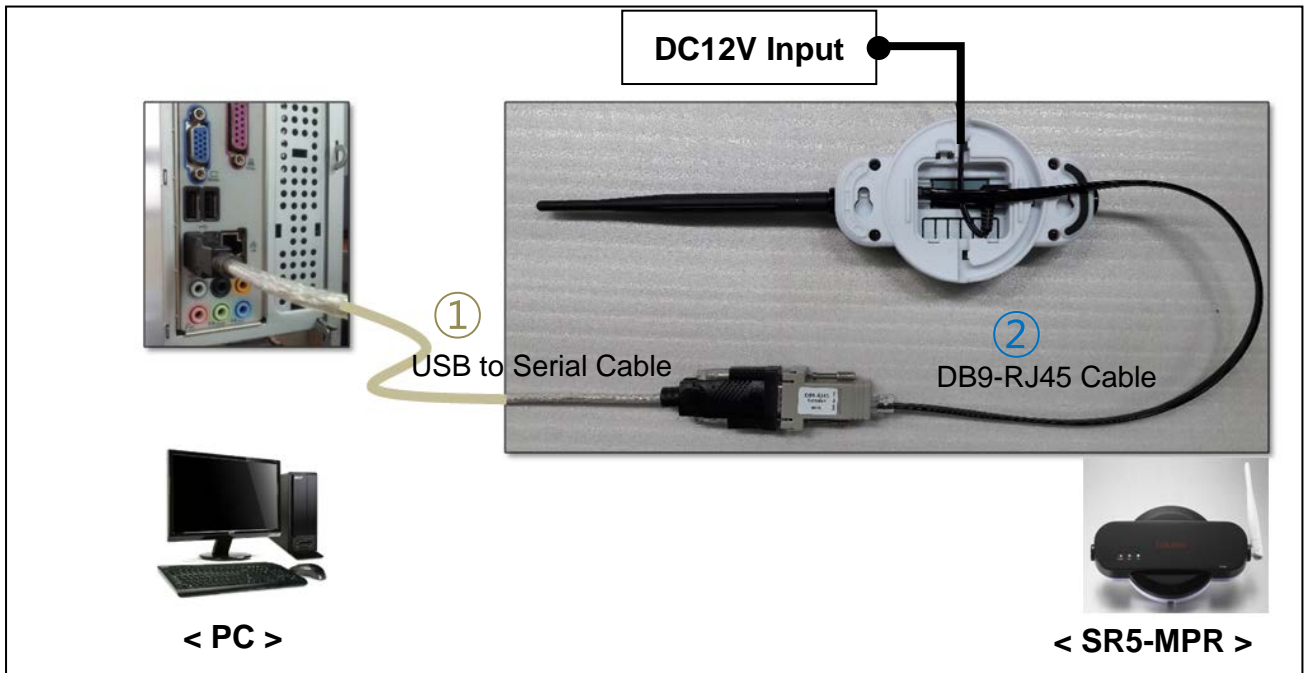
*Start – All Programs – Firebird 2.1*



※ **Firebird 2.1:** This is a DB related program. Do not change or delete the setting as it may disable the normal operation of Monitoring Program.

## 5. Hardware Configuration

### 5.1. Hardware Wiring



[Hardware Wiring]

- ① Connect the DC12V adapter to SR5-MPR (MPR) to power it on.
- ② Connect the "USB to Serial Cable" to the USB port of PC.
- ③ Connect the RJ45 Jack of DB9-RJ45 Cable to SR5-MPR (MPR), and connect the other end to the 'USB to Serial Cable'.

### 5.2. Specification of Communication Cable



① USB to Serial Cable



② DB9 to RJ45 Cable

## 6. Program Execution

### 6.1. Program Startup

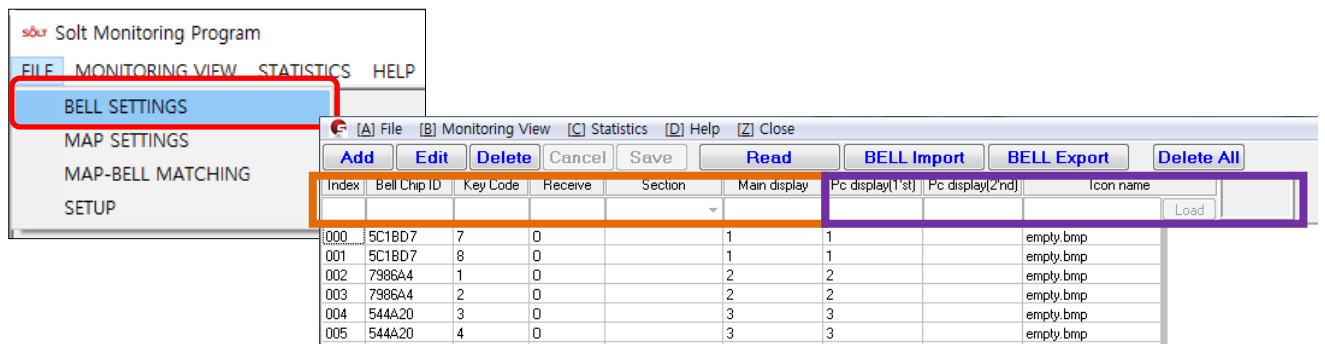
- ① Double-click on Solt Monitoring Program on the wallpaper to execute.



## 7. Setting

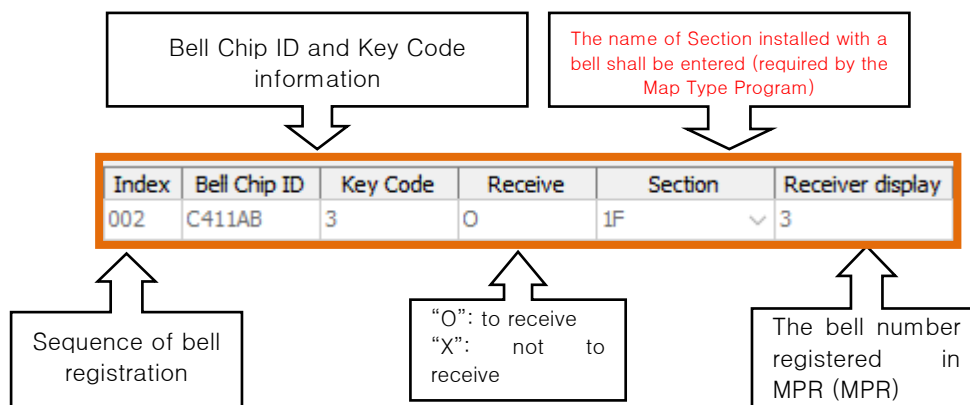
### 7.1. Bell Registration & Edit (FILE – BELL SETTINGS)

- ① **Read**: Automatic registration of the bell information registered in MPR (If any bell information exists in the existing program, it will be loaded upon initialization.)



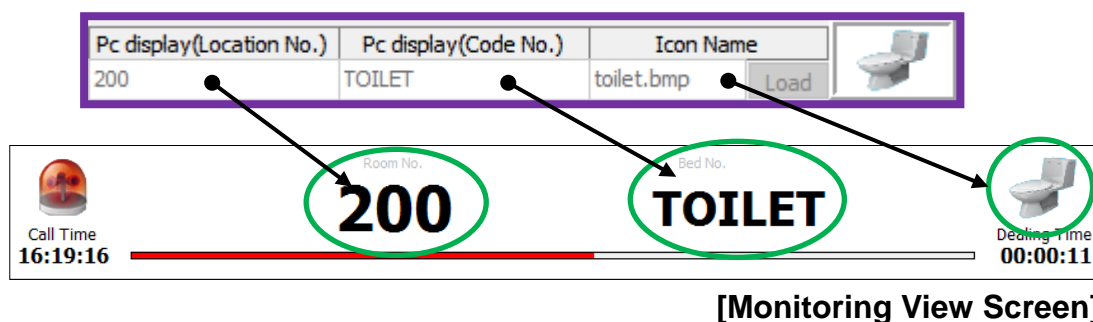
[Bell Settings Screen]

- ② **Add**: To register a new bell individually  
Only enabled when the Bell Chip ID is known
- ③ **Edit**: To change the display number or icon registered in the Program





# Solt PC Monitoring Program User's Manual



④ **Delete** : To delete an individual bell registered in the Program

⑤ **Cancel** : To cancel registration or edit of a bell

⑥ **Save** : To save registration or edit of a bell

⑦ **BELL Export** : To convert into an Excel file

※ *BELL Export: If the display cannot be changed easily because there is a great number of bells, the data can be converted to an Excel file for global changing.*

⑧ **BELL Import** : To load the Excel file that had been converted by "Bell Export"

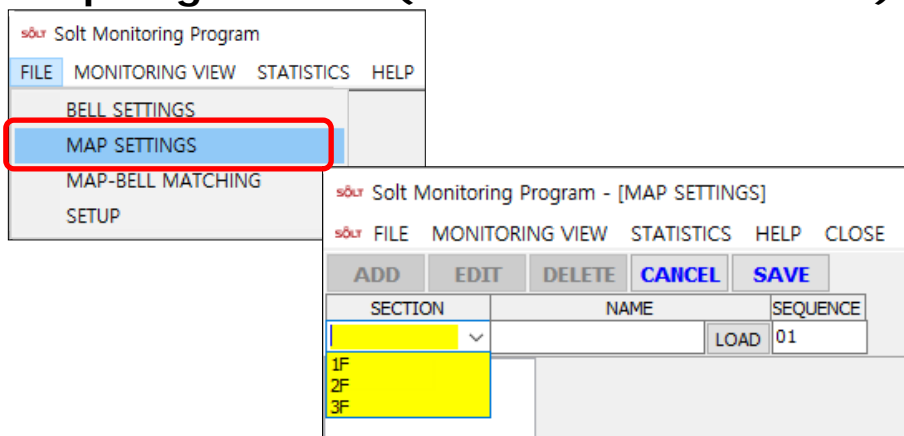
Index	Bell Chip	Key Code	Receive	Section	Main disp	Pc display	Pc display	Icon name
000	94A3B1	1	O		601-1A			
001	94A3B1	2	O		601-1A			
002	94A3B1	3	O		601-2B			
003	94A3B1	4	O		601-2B			
004	94A3B1	5	O		601-3C			
005	94A3B1	6	O		601-3C			
006	4A1287	1	O		100-T			
007	7986A4	1	O		100-A1			
008	7986A4	2	O		100-A1			

SPM Monitoring Sheet3

The second sheet named "Monitoring" is loaded. (Do NOT change the sheet name.)

⑨ **Delete All** : To delete all bell information registered in the Program

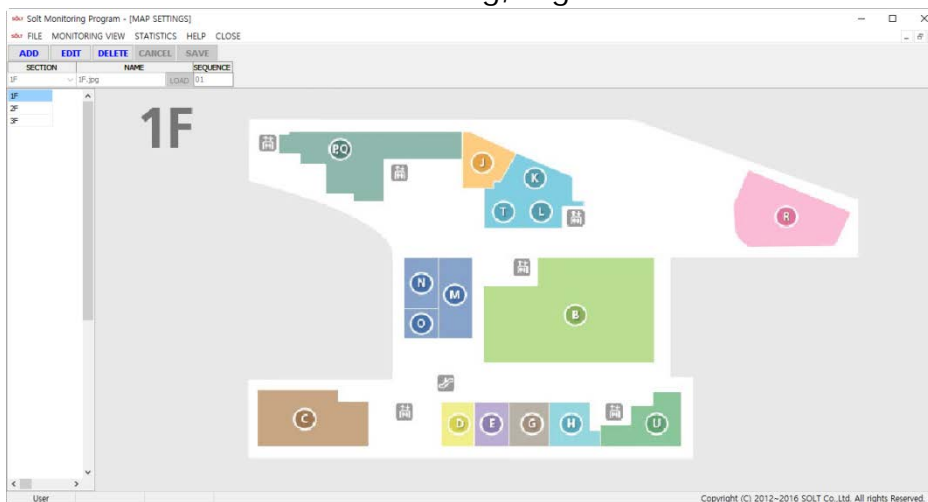
## 7.2. Map Registration (FILE – MAP SETTINGS)



- To add a Map, press the **ADD** button, click on [Dropdown] under SECTION to select a name of drawing, press the **LOAD** button to load an image for the new Map, and press **SAVE**.  
If the SECTION is empty, you must add "SECTION" for each bell under "BELL SETTINGS".

※ Supported MAP image file: JPG, PNG, BMP etc regardless of resolution.

- If there is more than one drawing, register each of them in the above method.



**[Map Setting Screen]**

## 7.3. Bell Coordinate Setting (FILE - MAP-BELL MATCHING)

SEL	Index	Key	Section	PC Display1	'C Display:
O	000	1	1F	100	BED
O	001	1	1F		BED
O	002	3	1F	200	TOILET
O	003	1	1F	300	BED
O	004	3	1F	300	TOILET
X	005	2	1F	100	
X	006	15	1F	200	
X	007	15	1F	300	
X	008	14	1F	Manager	cancel
O	009	1	2F	400	Call
O	010	1	2F	500	Service
O	011	3	2F	500	Bill
O	012	5	2F	500	Water
O	013	1	3F	600	Service
O	014	3	3F	600	Bill
O	015	5	3F	600	Water
O	016	1	3F	700	Service

### 7.3.1. Bell Location Setting


Select the first item from the bell list on the left, place the warning lamp icon on the map, and double-click on the icon or press **SAVE** at the top to save the coordinate. Repeat this procedure to save the rest of the bells.

### 7.3.2. To Verify "Save"

SEL	Index	Key	Section	PC Display1	'C Display:
O	000	1	1F	100	BED
X	001	1	1F	200	BED

- ① "O" or "X" in the "bel\_select" box indicates whether or not the warning lamp icon is saved.
- ② If the monitoring program is a "Cancel" type, you do not need to designate the cancelling locations. (Cancel Key Values: 2, 4, 6, 8, 10, 12, 15, 16)

## 7.3.3. Excel Conversion & Description of Icons

BELL IMPORT		BELL EXPORT			
LOCATION	TOP	63	LEFT	310	
SIZE	HEIGHT	32	WIDTH	32	
<b>SAVE</b>					

- ① **BELL IMPORT**, **BELL EXPORT** : To back up bell information, icon location and icon size in an Excel file (to prevent data loss during re-set at later dates)
- ② **LOCATION** : The coordinate value of the current icon
- ③ **SIZE** : To adjust the size of individual icon (Default: 36x35)
- ④ **SAVE** : To save the current icon as is (this is the same as “double-clicking” on the icon)

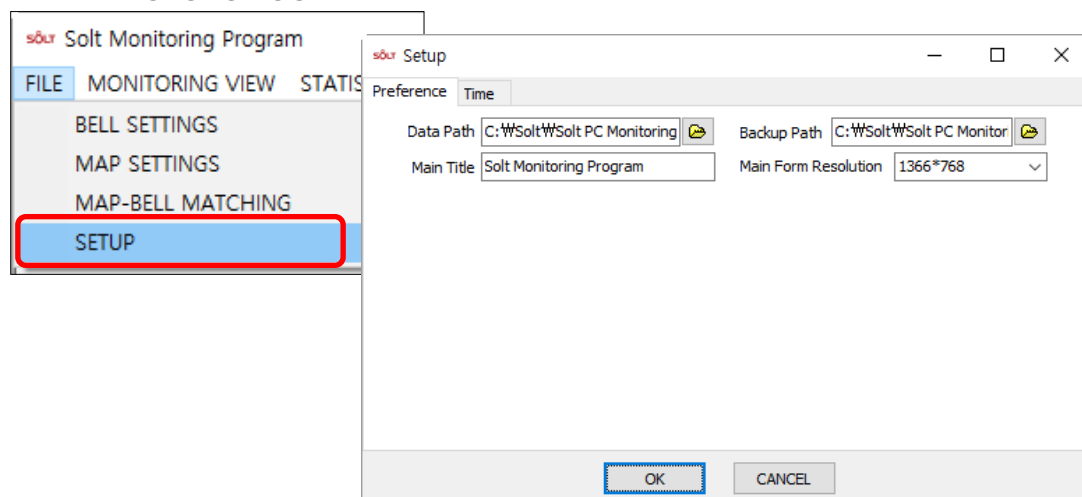
## 7.3.4. Global Change of Icon Size

SIZE CHANGE ALL	HEIGHT	30	OK
	WIDTH	30	Cancel

The height and width of icon can be globally changed. (Default: 36x35)

## 7.4. Setup

### 7.4.1. Preference



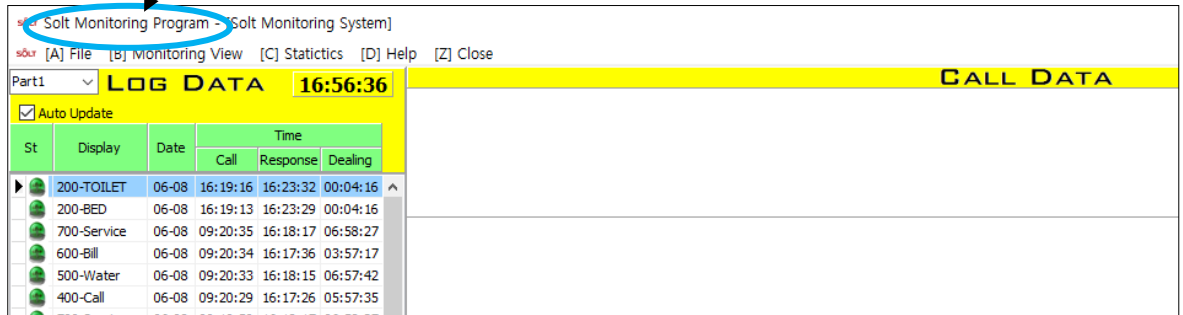
**[Preference Screen]**

- ① Data Path: To designate the path of DB file (Default: C:\Solt\Solt PC Monitoring\xxxxx\data)
  - ② Backup Path : To designate the backup path of DB file (Default: C:\Solt\Solt PC Monitoring\xxxxx\Backup)  
(The DB file is an important file containing bell information. It may be damaged owing to 'System Format' or 'System Error'. If possible, designate the D drive or an external storage as the backup path.)
- ※ Backup : Automatic backup is made in the “date.hdb” format at every midnight to the designated path. You are also prompted to back up every time you exit the Monitoring Program.
  - ※ Recovery of Backup File: Change the name of the latest file in the backup folder to “cis\_hms.gdb” and paste it into the Data folder.

# Solt PC Monitoring Program User's Manual

- ③ Main Title: To change the title of Monitoring Program

Main Title



- ④ Main Form Resolution: To set resolution of the Program (The will take effect upon re-start of the Program)

Main Form Resolution

- Maximized: To set to the full monitor screen size
- 1366\*768: (Default)
- 1600\*900

## 7.4.2. Time

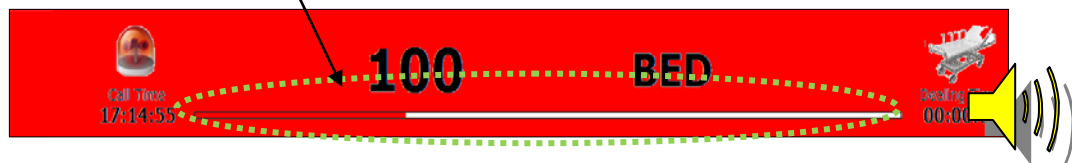
- ① Part time Setting: To operate by shift (The shift performance can be shown by comparing the Dealing Time during each shift.)

Time

Part 1	07:00:00	~	14:59:59
Part 2	15:00:00	~	22:59:59
Part 3	23:00:00	~	06:59:59

- ② Dealing time: A siren will sound continuously through the PC speakers if a call is not dealt with within the set dealing time. (the siren will stop when the call is dealt with.)

DEALING TIME  s



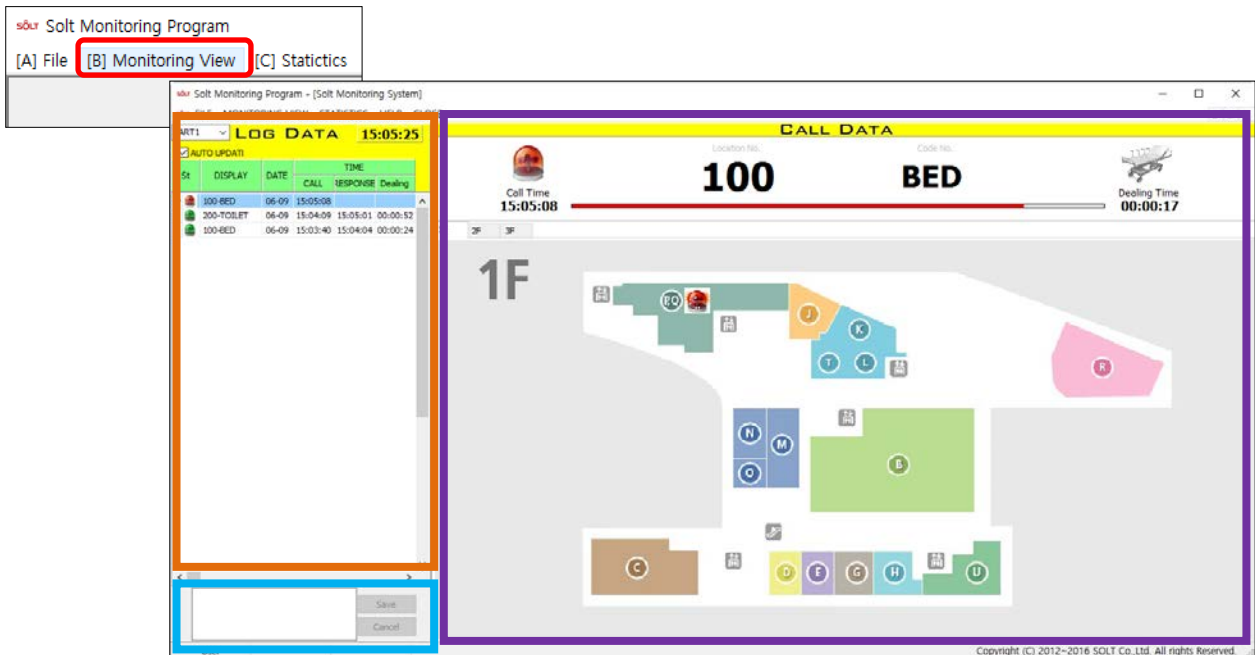
- ③ Flash time: This is the speed of panel flickering upon call or receipt of 'Cancel'.

Flash Time  ms

- ④ Cancel time: This is the time taken from the receipt of 'Cancel' to 'Delete'.

## 8. Monitoring View

- The screen to check call information



[Monitoring View Screen]

### 8.1. Log Data

St	Display	Date	Time		
			Call	Response	Dealing
300-TOILET	06-08	17:32:19			
200-TOILET	06-08	17:32:16			
100-BED	06-08	17:32:14	17:32:23	00:00:09	
100-BED	06-08	17:14:55	17:32:12	00:17:17	
100-BED	06-08	17:08:54	17:14:28	00:05:34	

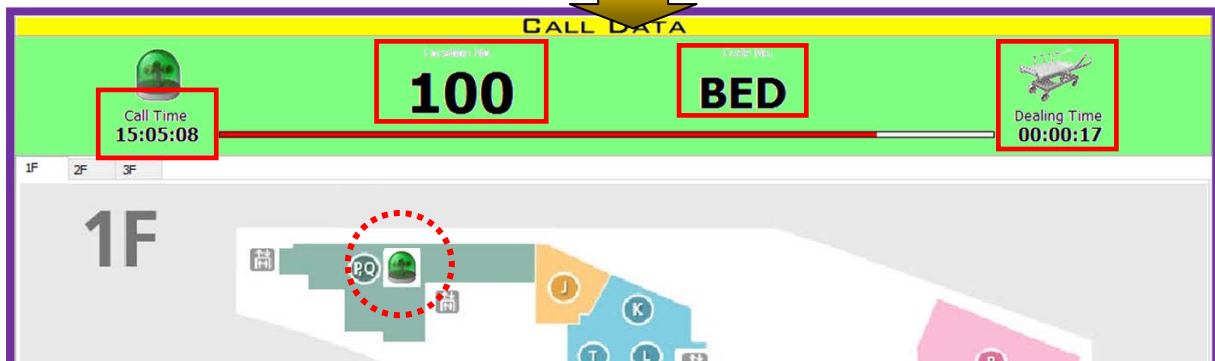
Current Time

- The history of calls is recorded by shift.
- The log data will be initialized when the screen moves to the next shift.

### 8.2. Call Data

- The current call is displayed. A single call and its location are shown in the map (in the resolution of 1366\*768)

The call made by the BED of Room 100 at 15:05:08 was dealt with in 17 seconds.



## 8.3. Memo

- History of each call among the Log Data can be record.



## 9. Statistics

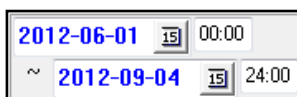
- Information stored in DB can be searched by date, shift, dealing method or key word, and can be documented and converted to an Excel file.

Status	Date	Display	Call Time	Response Time	Dealing Time
2012-09-03	300-B1		16:47:32	17:45:57	00:58:25
2012-09-03	200-T		16:49:57	17:45:56	00:55:59
2012-09-03	200-T		21:08:41	21:08:53	00:00:12
2012-09-03	300-B1		21:08:45		
2012-09-03	200-T		21:26:56	09:28:30	12:01:34
2012-09-03	300-B1		21:27:02	21:27:12	00:00:10
2012-09-03	300-B1		21:27:32	21:28:45	00:01:13
2012-09-03	300-B1		21:29:08	21:29:12	00:00:04
2012-09-03	300-B1		21:45:43	09:28:46	11:43:03
2012-09-04	200-T		09:29:25	14:03:48	04:34:23
2012-09-04	300-B1		09:29:28		
2012-09-04	200-T		11:16:24	11:18:16	00:01:52
2012-09-04	300-B1		11:16:27	11:42:53	00:26:26
2012-09-04	200-T		11:18:39	11:18:56	00:00:17
2012-09-04	200-T		11:42:45	11:42:52	00:00:07
2012-09-04	200-T		11:43:04	11:44:00	00:00:56
2012-09-04	300-B1		11:43:08		

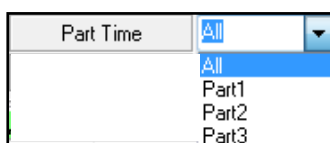
[Statistics Screen]

## 9.1. Search Condition

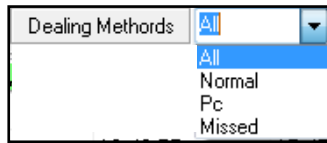
- Select Date: To designate range of dates and times for search



- Part Time: To search by shift set under 'Setup'.

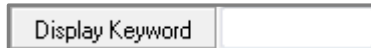


## ③ Dealing Methods: The method of dealing of calls



- All: 'All' methods
- Normal: Dealt by pressing the Cancel button on the bell
- PC: Dealt (canceled) by the mouse on the Monitoring screen
- Missed: Call that have not been dealt with

## ④ Display Keyword: Keyword search



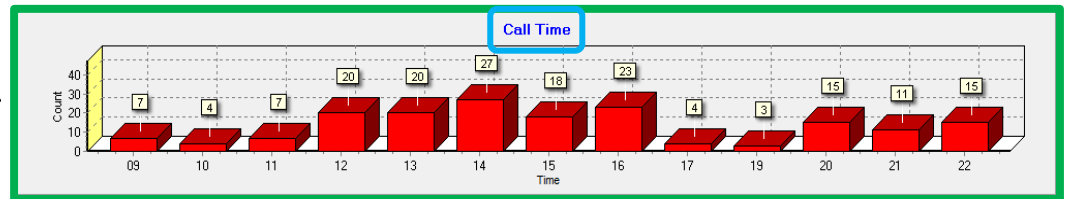
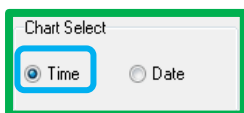
## 9.2. Result

Number of Call	174	
Number of Dealing	119	68 %
Number Not Dealing	55	32 %
Avg Dealing Time(s)	01:05:45	

- ① Number of Call: The number of total calls made
- ② Number of Dealing: The number of dealings made (in numbers and in %)
- ③ Number Not Dealing: The number of call not-dealt with (in numbers and in %)
- ④ Avg Dealing Time(s): The average dealing time (excluding the not-dealt calls)

## 9.3. Chart

- ① Time: To display the number of calls by time of a day



- Date: To display the number of calls by date

