



## User's Guide

---

SR5-BPR

- Thank you for purchasing Solt wireless calling system products.
- Please read this user's guide carefully before using and follow the instructions.
- Specification and instructions are subject to change without notice.

## Contents

Important Safety Instructions .....	3
Installation guide and notice for attention .....	4
Name of each Part .....	5
Components .....	6
Type of set mode .....	6
E1. Frequency setting .....	7
E2. Call bell ID registration .....	8~9
E3. Setting of the time for prevention of duplicate reception .....	10
E4. Transmission delay time setting .....	11
E5. Individual deletion of the call bell ID .....	12
E6. [No Receive] bell ID setting .....	13

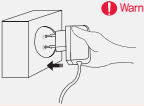

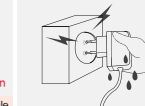

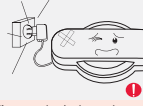




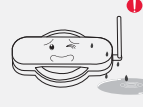

Specification	
Model	SR5-BPR
Frequency(MHz)	447.8625 ~ 447.9875
Freq Stability	±5 ppm
Data Rate	1800 bps
Channel space	12.5 KHz
Modulation	FSK (±3KHz)
Output Power	10mW (Max)
Sensitivity	-118dBm (at 12dB)
Power Supply	DC 12V/1A Adapter
Dimension(mm)	146W × 90L × 32H
Battery Life cycle	External Power
Antenna	Tilt base snap-in_dipole (External)

## Important Safety Instructions

Safety Instruction contains the information to prevent the unexpected risk or damage in advance by using the product in correct way and it should always be observed all the times.

**Warning** This is for the case with the possibility of serious injury or death if this is not observed.

**Caution** This is for the case with the possibility of minor injury or damage to the product if this is not observed.

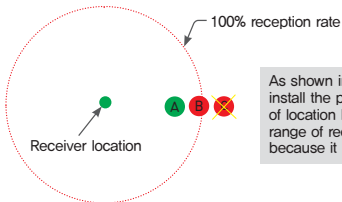
Power precautions	 <p><b>Warning</b></p> <p>Be sure to insert the power plug to the end of the inner part. [If the connection is unstable, it may cause fire.]</p>	 <p><b>Caution</b></p> <p>Be sure to unplug the power plug while holding it firmly. If cord is unplugged by pulling out, some parts of the cord can be disconnected and it may cause risky situation. [It may cause fire.]</p>	 <p><b>Caution</b></p> <p>Do not touch the power plug with wet hand. [There is a risk of electric shock.]</p>
	 <p><b>Warning</b></p> <p>Do not use one socket for multiple devices at the same time. [It may cause fire due to overheating of the socket.]</p>	 <p><b>Caution</b></p> <p>If power plug is dropped or case is broken, unplug the power cord. [If it is used as it is, it may cause fire or electric shock. Please contact service center.]</p>	 <p><b>Caution</b></p> <p>In case of thunderstorm or lightning or if the power plug is not used for long time, unplug the power cord. [There is the risk of electric shock or fire.]</p>
	Use precautions	 <p><b>Caution</b></p> <p>Do not press or scrape the screen surface strongly with hand or sharp object (nail, pencil, pen, etc.) [The screen surface can be damaged or it can cause failure.]</p>	 <p><b>Caution</b></p> <p>Do not spray inside or outside of the product with water or clean it with benzene or thinner. [This can lead to poor insulation of the electric device and cause electric shock or fire.]</p>
 <p><b>Warning</b></p> <p>Do not separate, repair or remodel the product by user own decision. In case repair is needed, contact service center. [It may cause fire or electric shock.]</p>		 <p><b>Caution</b></p> <p>Do not install the product at humid, dusty or watery place. [It may cause an electric shock or fire.]</p>	 <p><b>Caution</b></p> <p>If possible, avoid installing the product at the place near to metal sheet, wire or LED light. [Distance between transmission and reception can be shortened depending on surrounding environment.]</p>

## Installation guide and notice for attention

For smooth use of the product, be sure to install the product carefully together with attention for followings.

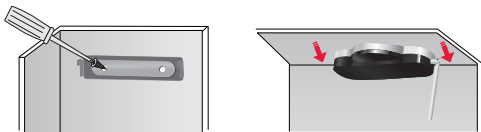
### Determining the location for installation

※ Install in the place with 100% reception rate.



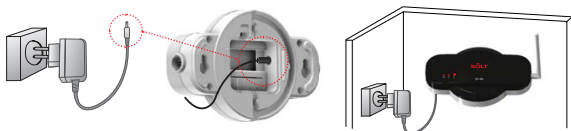
As shown in the picture, it is most reliable to install the product on the location A and in case of location B, even though it is located within the range of reception rate, it is unstable location because it is close to border line.

Fixing the cradle (Be sure to fix the cradle when the location for installation is determined.)  
Placing the repeater on the fixed cradle (Fix it until you hear click sound.)



It is the best case when product is fixed on the ceiling as shown in the picture above and antenna points downward, and in case this is not possible, installs the product close to ceiling as much as possible.

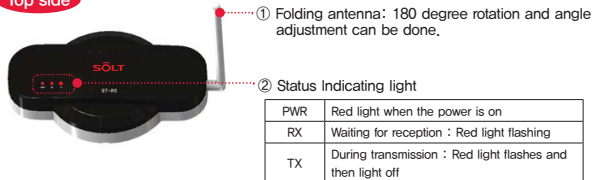
Connecting power supply (Be sure to use the adapter provided with the product.)



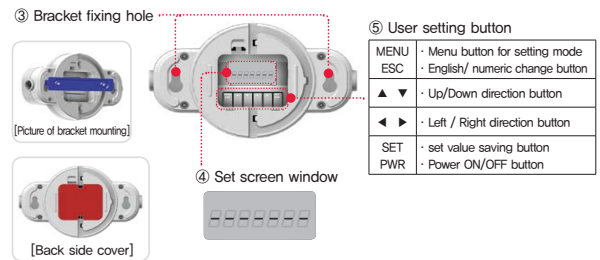
※ Humidity or flooding is the cause of malfunctioning for this product, therefore, be sure to install the product on the place water cannot reach.  
If product should be installed outside of the building, be sure to install it under the eaves or on the place where rain cannot reach.

## Name for each part

### Top side



### Bottom side



6. Adapter Input: DC12V 1A  
(Please be sure to use the adapter provided with the product.)



Adapter is one of expendable supplies.  
When necessary, please purchase an adapter with DC12V 1A

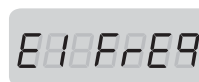
## Components



## Type of set mode

User can set following modes with user set button.

E1 FrEq	<b>Frequency setting</b> The function to set the frequency of the repeater.
E2 rEgT	<b>Call bell ID registration</b> The function to register the ID of the call bell to be relayed.
E3 dUPT	<b>Setting of the time for prevention of duplicate reception (Default setting is 3 seconds)</b> The function to restrict reception for call from the same call bell.
E4 TXdT	<b>Transmission delay time setting (TX Delay Time)</b> The function to set the delay time of the transmission after receiving call.
E5 dELE	<b>Individual deletion of the call bell ID</b> The function to delete registered call bell individually.
E6 NOrX	<b>[No Receive] bell ID setting</b> The function to set the call bell which user does not want to receive among the registered call bells.



## Frequency setting

· The function to set frequency of the repeater.

(1) Press the MENU button and enter the setting mode.



(2) Press the SET button at [E1].



(3) Select the frequency with up/down button (▲ ▼).



(4) Press SET button, then set value is saved.



(5) Press MENU button, then it turns to standby for reception status.





### Call bell ID registration

· The function to register the ID of the call to be relayed.

(1) Press the MENU button and enter the setting mode.



· [E1 FrEq] is displayed on the screen.

(2) Select [E2] mode with Upward (▲) button and press SET button, and then "1" flashes.



· [E2 rEgT] is displayed on the screen, and then "1" flashes.

(3) Set the number (bell ID) you want with Up / Down, Left / Right (▲▼◀▶) and MENU button.



Left / right (◀▶) button Move digit number

Press MENU button for three seconds  
Number and alphabet conversion

Number / Alphabet that can be expressed

Number	0 1 2 3 4 5 6 7 8 9 <small>(Blank)</small>
Alphabet	A B C D E F G H I J K L M N O P Q R S T U V W X Y Z - _ <small>(Blank)</small>

(4) When call bell button to be registered is pressed, set number is registered with a "beep" sound and number is automatically increased to the number next to the registered number and it is displayed on the screen.

(Ex, when "1" is registered, and then number on the screen is automatically increased to '2' / when 'A' is registered, it is automatically increased to 'b' on the screen)



· In order to register a bell as automatically increased number repeat process (4) and for registration for other numbers repeat process (3) and (4).

(5) After completion of the registration, press the SET button.



· [E2 rEgT] is displayed on the screen.

(6) Press MENU button, then it turns to standby for reception status.



· [-----] is displayed on the screen.

E3 dUPT

### Setting of the time for prevention of duplicate reception

· The function to restrict reception of the same call bell during set time.

(1) Press the MENU button and enter the setting mode.



· [E1 FrEq] is displayed on the screen.

(2) Browse [E3] mode with UP (▲) button and press SET button.



· [E3 dUPT] is displayed on the screen.

Default setting is 5 seconds and [005] is displayed on the screen.

0058888

(3) Set the desired set value with up/down button (▲▼).



· Set number is displayed on the screen.

(4) Press SET button, and then set value is saved.



· [E3 dUPT] is displayed on the screen.

(5) Press MENU button, then it turns to standby for reception status.



· [-----] is displayed on the screen.

E4 TXdT

### Transmission delay time setting

· The function to set delay time for transmitting after receiving call bell.

(1) Press the MENU button and enter the setting mode.



· [E1 FrEq] is displayed on the screen.

(2) Browse [E4] mode with UP (▲) buttons, and then press SET button.



· [E4 TXdT] is displayed on the screen.

Default set value is 2 seconds and [020] is displayed on the screen.

0208888

(3) Set desired set value with up/down button (▲▼).



· Set number is displayed on the screen.

(4) Press SET button, and then set value is saved.



· [E4 TXdT] is displayed on the screen.

(5) Press MENU button, then it turns to standby for reception status.



· [-----] is displayed on the screen.



### Individual deletion of the call bell ID

· The function to delete registered call bell individually.

(1) Press the MENU button and enter the setting mode.



· [E1 FrEq] is displayed on the screen.

(2) Browse [E5] mode with up (▲) button and press SET button, then the call bell ID registered at the first is displayed.



· After [E5 dELE] is displayed on the screen, then the call bell ID registered at the first is displayed on the screen.

(3) Select the call bell ID to be deleted with Up/Down (▲▼) button.



· The call bell ID selected is displayed on the screen.

(4) When the right (▶) button is pressed, then selected ID is deleted and a beep sound output is made.



· To delete another call bell ID, (3) and (4) process is needed to be repeated.

(5) When MENU button is pressed after pressing SET button, it turns to standby for reception status.



· [E5 dELE] is displayed, and then [-----] is displayed.



### [No Receive] bell ID setting

· The function to set call bell which user does not want to receive among the registered call bells.

(1) Press the MENU button and enter the setting mode.



· [E1 FrEq] is displayed on the screen.

(2) Browse [E6] mode with UP (▲) button and press SET button, then the call bell ID registered at the first is displayed.



· After [E6 NoRx] is displayed on the screen, then the call bell ID registered at the first is displayed on the screen.

(3) Select the call bell ID not to be received with Up/Down (▲▼) button.



· The call bell ID selected is displayed on the screen.

(4) Set "to be received/ not to be received" with the right direction (▶) button.



· Whenever right direction (▶) button is pressed, (No Receive) icon is on and off in turn and the ID set by the icon is not received.

(5) When MENU button is pressed after pressing SET button, it turns to standby for reception status.



· [E6 NoRx] is displayed, and then [-----] is displayed.