

Guest Paging System



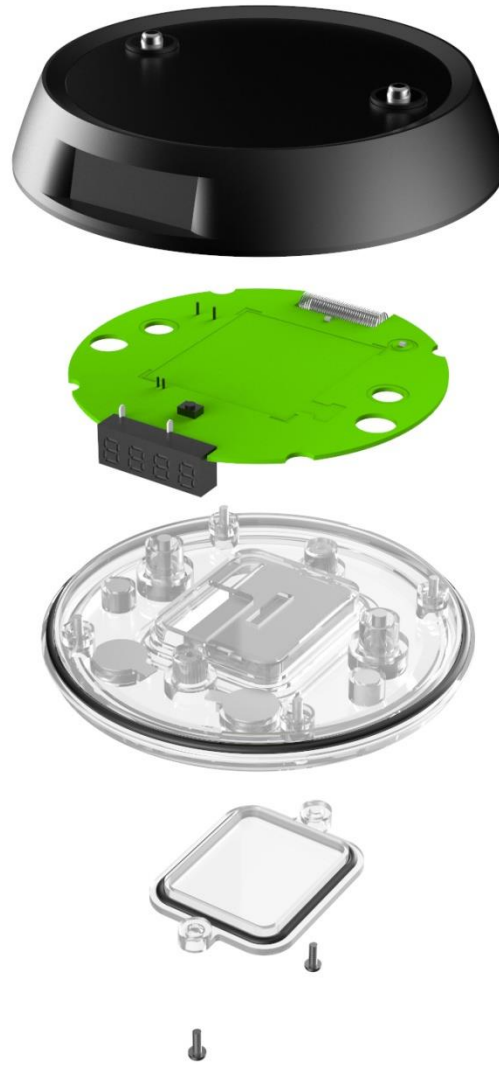
I. Design Concept - SG1



Image of spacecraft using transparent bottom and levitation feeling, Top and bottom Dual-LED lighting Indicators



Magnet applied for storing..... maximization of charging efficiency, easy and correct storing



TPU band applied..... perfect waterproof



Modern and luxurious design(by perfect round shape/good body line/metallic black color), easy grip, Dual LED, waterproof, stable storing and charging

Design Concept - SQ100



Sophisticated digital image - Piano-black color, mobile-phone rate shape, glossy edge, roundish corner

II. Specifications and Features

RF Type and Frequency : FM / 434 MHz

Display

- SQ100 : Mono FSTN Graphic LCD
- SG1 : 4-digit 7-segment LED

Power Supply

- SQ100 : DC 12V / 1A
- SG1 : Rechargeable Lithium-polymer(250 mA)
- SC1 : DC 9V / 3A

Size

- SQ100 : W210 X L90 X T33 mm
- SG1 : Ø88 X T20.4 mm

Features

- Out-of-range alarm
- Alarm method selectable : vibration-beep-LED
- Multiple chargers available
- Battery replaceable outside(SG1)
- Low battery level alarm(SG1)
- SQ100 wall mount available
- Waterproof(SG1)
- Touch panel applied(SQ100)
- Recharging battery embedded for blackout(SQ100)



[Transmitter SQ100]

Size : 210W×90H×33T

Weight : 237g

Product Color : Black

Display : Mono FSTN Gr

Frequency Type / bandv

Power : DC 12V/1A(Or I

Antenna : Internal Helic



